

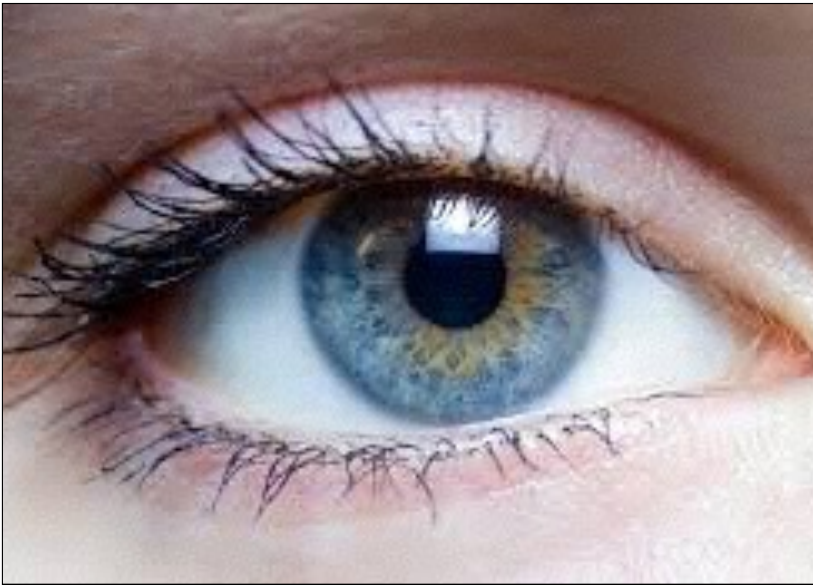
---

# All in the Eyes

## Drawing and painting eyes lesson plan

by Jane Denman, Skyblue Art Classes - 19 November 2015

---



Getting eyes just right is often one of the areas that we all strive for with portraits or animal portraits. Its the area that we immediately seek out with a face.

We examine how to paint and draw eyes (from the front rather than a side angle - we will tackle that another time)

The photo below illustrates just how much of a lens the eye is

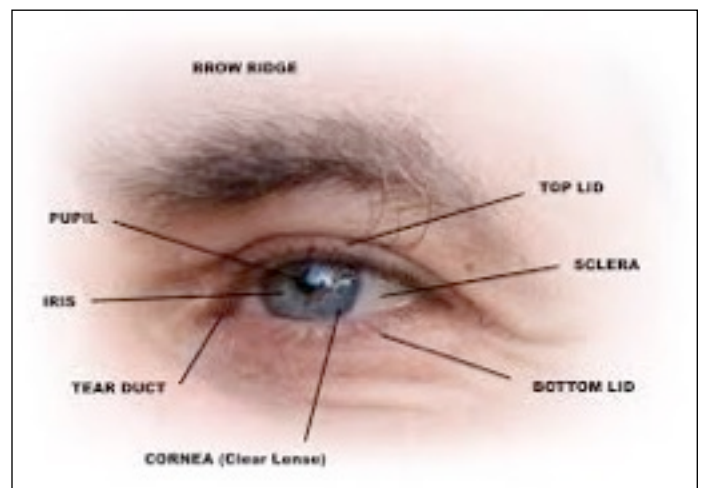
Areas of the eye to consider:

The eye is a 'socket'

The eye areas are the eye lid, cornea, lower lid, eyeball, pupil, iris, eyelashes, corner of the eye, the eye brow, inner section connecting to nose

Eyes are shaded often by the brow (protecting the eye) and the eyelid. Notice the shadow onto the eyeball from the eyelid.

The shapes of the whites of the eyes vary depending on where the eye is looking, they are rarely the same shape on either side of the cornea.



Draw the outer shape of the whole eye, brow, nose area and even below connecting to cheek

Draw lightly in H pencil

Draw what you see

Consider areas such as the lashes, what are you seeing?

Where are shadow areas?

Where are highlights (apart from the obvious one that everyone looks to painting first!)



### *Colours for human eyes:*

Skin tone colours, fair skin:

- cadmium red pale or
- scarlet lake
- yellow ochre
- cobalt blue

If you don't have any of these, bring your red, blue and yellow

If the eye is a dark blue:

- Ultramarine
- Prussian

Plus: Burnt Umber, Burnt Sienna and Ultramarine (great for shadows)

### *Good brushes*

Fine point brushes as well as small flats are great for eyes

This cat's eye above has such beautiful colour, it is offset by the intense black surrounding most of it. This in turn is made blacker by the white fur beneath the black line

Colours you could use for this eye either in acrylic or watercolour (you won't need the white) are:

- Yellow ochre with a touch of cadmium yellow and a touch of white
- Yellow ochre
- permanent green
- Black or Burnt Umber and Ultramarine mixed
- White
- A tiny amount of the Umber and Ultramarine can be added to the white to provide an off white for the fur

