
Drawing flowers

techniques for starting out

by Jane Denman - 1 July 2015

This beautiful painting by Sir Cedric Morris has such wonderful colours and shapes to draw. Be inspired by summer with the abundance of flowers and sit and draw in the garden, on holiday or just out and about.

If you are a beginner, you might wonder where to start...



Just a few art materials:

- small board and masking tape
- cartridge paper (not too thin) tape your paper to the board to draw on
- ruler
- pencils: (H) are hard great for thin light lines (B) soft, good for dark thick lines (HB) middle of the road, good all rounders
- pencil sharpener, rubber

Cedric Morris' painting is complex, it has a lot of elements. However, you could just draw one or two of the flowers. Cover the sections you don't want to draw with smaller pieces of paper, choose the shapes and colours of the ones you do want to

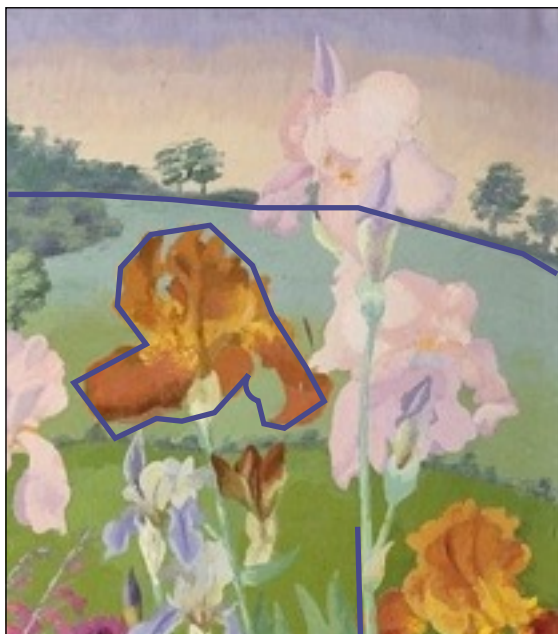
Draw with your ruler onto the print out where you want to section the painting off.

Now, on your paper draw a frame the same size as your print out and the flowers you want to draw. This is important to get right, if you are drawing from a rectangular image and draw a square frame you will have trouble! Always start with a frame to draw in :)

Start by keeping things simple!



GET THE BIG SHAPES IN FIRST



Ready to draw!

In your frame, draw the BIG shapes first. These are: sky and field (see line on left). Then draw the next largest shapes, see outlined flower (roughly) where you think, pay attention to the type of shape they are, see how the stem connects to the bottom part of the frame, resist putting in detail! Continue until you have all the large shapes in, then work to medium sized shapes and then the small shapes. Don't worry if you find they are not in the right place. Look, decide and then re-draw!

Tip: re-draw before rubbing out!
Practice, practice practice!